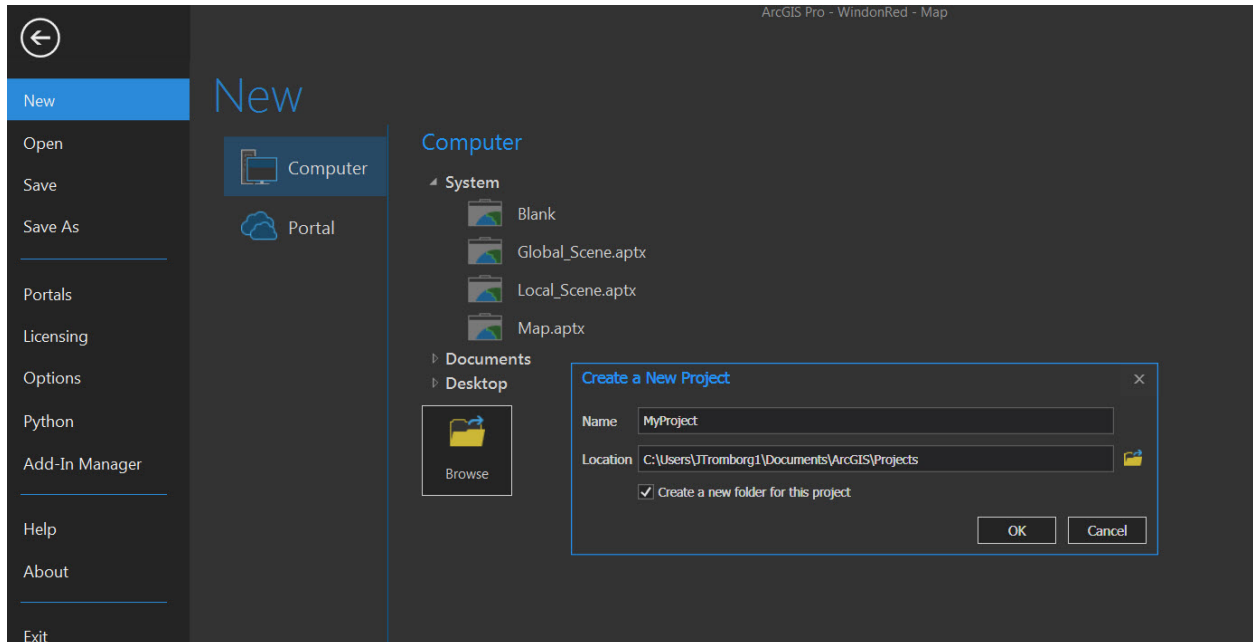


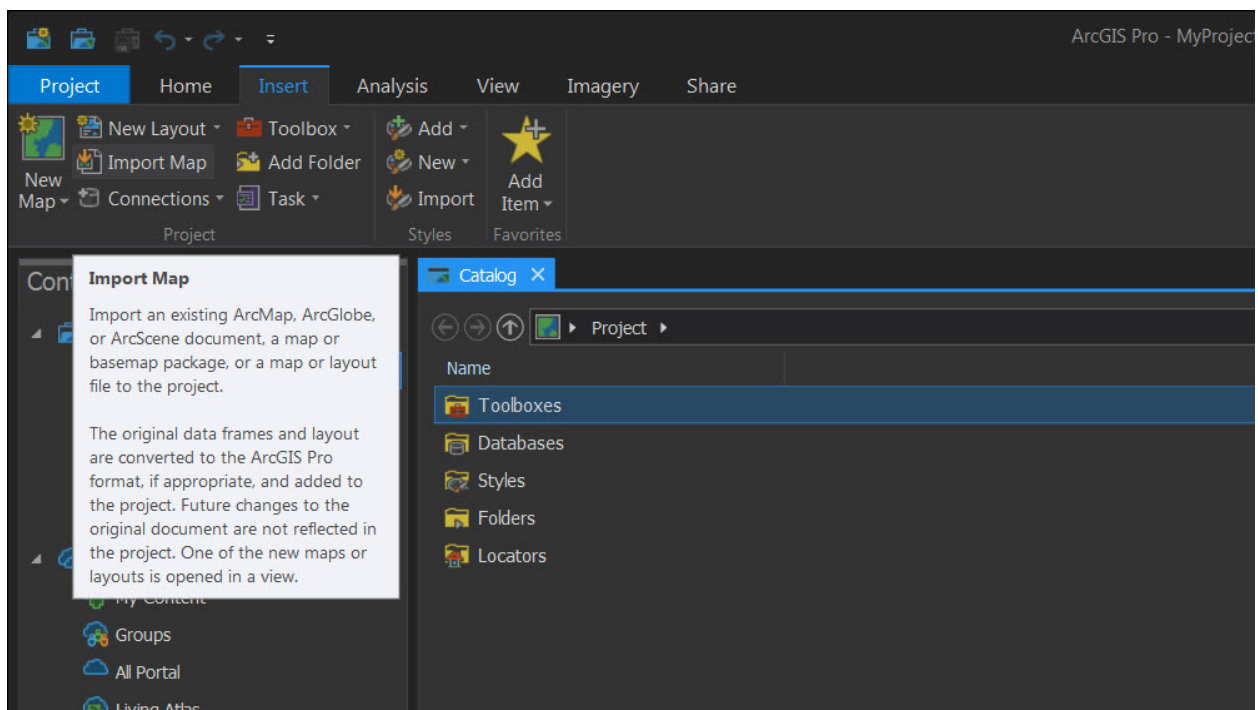
Convert ArcMap Document to ArcPro

Import a map document

1. Create a new project file.

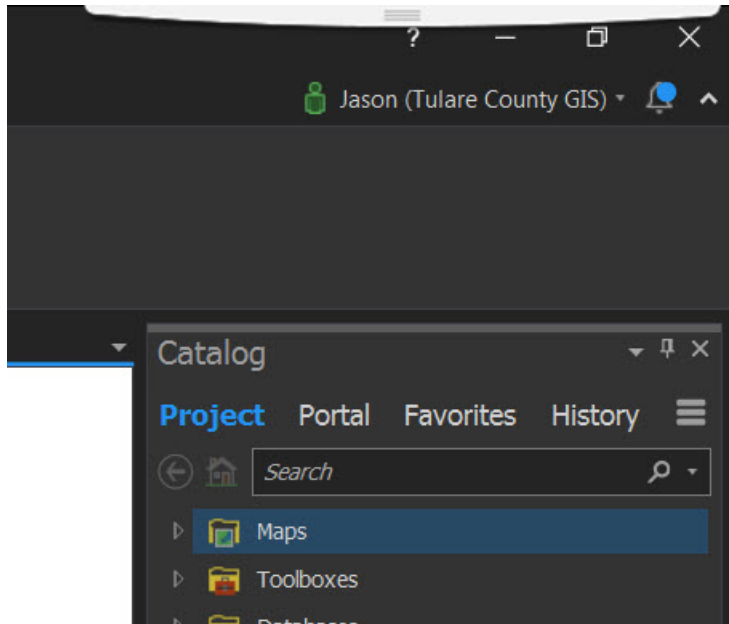


2. You can import an ArcMap map document (.mpk) on the Insert tab of the ribbon. Click Import Map and search or browse to your file on the Import dialog box.

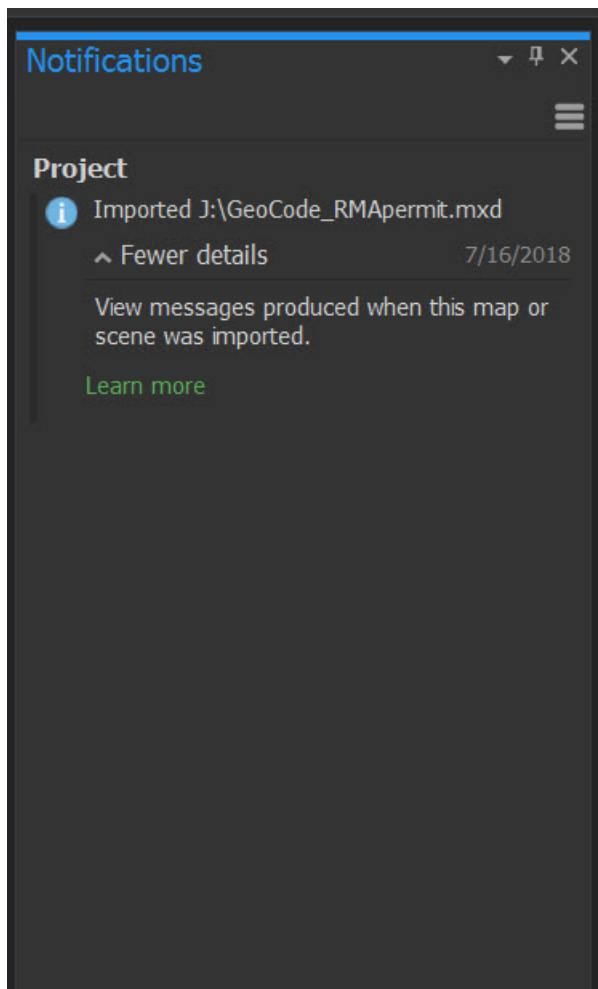


When you import a map, the map document opens as a map view in your ArcGIS Pro project. The layout of your map document is also imported. If your map document doesn't have a layout, a default layout is created from the map data.

3. When you import a map, a blue dot appears on the Notifications button Notifications above the ribbon. Open the notification to see messages about the import process.



4. Click the Notifications button Notifications.



5. In the Notifications pane, hover over the message to display a View Results link.
6. Save the ArcPro document and follow the instructions on publishing to the Portal if needed.

ArcGIS Pro uses a different drawing engine than ArcMap and this may cause subtle visual differences in the imported map.

To import a map package (.mpx)

1. On the Ribbon click the insert tab.
2. On the import dialog box, under portal, click all
3. At the top of the dialog box, in the search box, type in your map package name and press enter.
4. Select your map package from the list of search results.
5. Click OK
6. Save your project in ArcPro.